

La Dolce Vita in Oakland

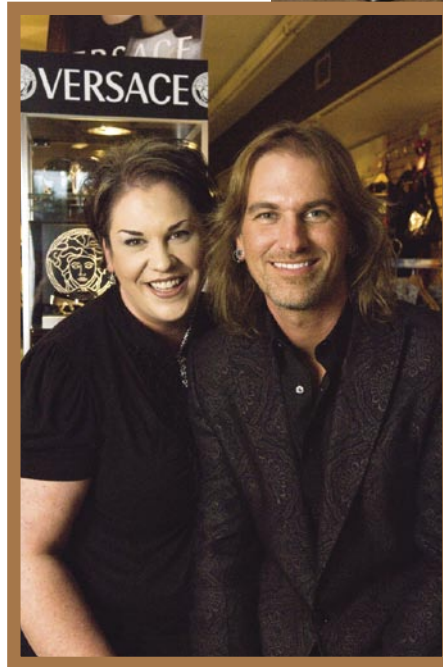
Written by **Sara Mullins**
Photography by **Lance C. Bell**

Haute couture has arrived — and is thriving — in Oakland, Maryland. Studio 24E, a multi-department lifestyle gallery, caters to aficionados of unique, fashionable items with a contemporary flair. Located on 210 East Alder Street near Englander’s Antique Mall, the gallery adds a touch of big city style to the quaint, small-town atmosphere of downtown Oakland. The intro from its web site www.studio24e.com, nicely sums up its mission: “If it excites you or makes you feel gorgeous, then it must be from Studio 24E.”

Artwork, home furnishings, jewelry, fragrances, sunglasses, handbags, clothing, shoes, soaps and music are some of the goodies featured in the gallery, which also offers in-house, custom framing services. It’s all designer quality and high style.

“It’s a lifestyle boutique,” says Greg Elliott, who owns and operates the gallery with his wife Nina. “You can buy into the whole concept or just a piece of it.” Customer service is a top priority; custom orders are readily available via catalogs.

Popular accessories include items like Versace and D & G Dolce & Gabbana sunglasses, OneSole and OkaB shoes, and Hobo International and Urban Oxide handbags. Customers can select jewelry from a “who’s who” of cutting-edge designers: Moschino Cheap and Chic, D & G Dolce & Gabbana, Rodrigo Otazu, Zoppini and Chamilia are just a few. The gallery’s artwork, contemporary in style and large in scale, is selected with an eye for impact. Examples include works in mixed media by artist Judy Hintz-Cox and photography by Lance Bell. Background music from the gallery’s Hotel Costes’ collection of Parisian-style lounge music provides a fitting ambiance that often prompts visitors to leave with a CD souvenir.



Greg Elliott and wife Nina Tate-Elliott of Studio 24E.

The gallery’s concept arises from a combination of the Elliott’s familiarity with the area, Greg’s picture-framing skills, and the couple’s joint experience in retail sales. As a child, Greg frequently visited Deep Creek Lake and developed an abiding affinity for the area. After high school,

Greg learned how to frame artwork and began working at Nordstrom’s near Annapolis, where he met Nina and became, in his words, “a retail junkie.” The couple lived in Severna Park before settling into the Oakland area.

Greg and Nina are committed to the gallery’s success in providing personalized shopping services to discerning, fashion-conscious customers. “We’re in this for the long haul,” says Greg. You, too, can Be Fabulous and make people’s heads turn with fashion forward merchandise from Studio 24E without having to drive to the Big City. For gallery hours, directions or more information, call (301) 334 – 4111.

