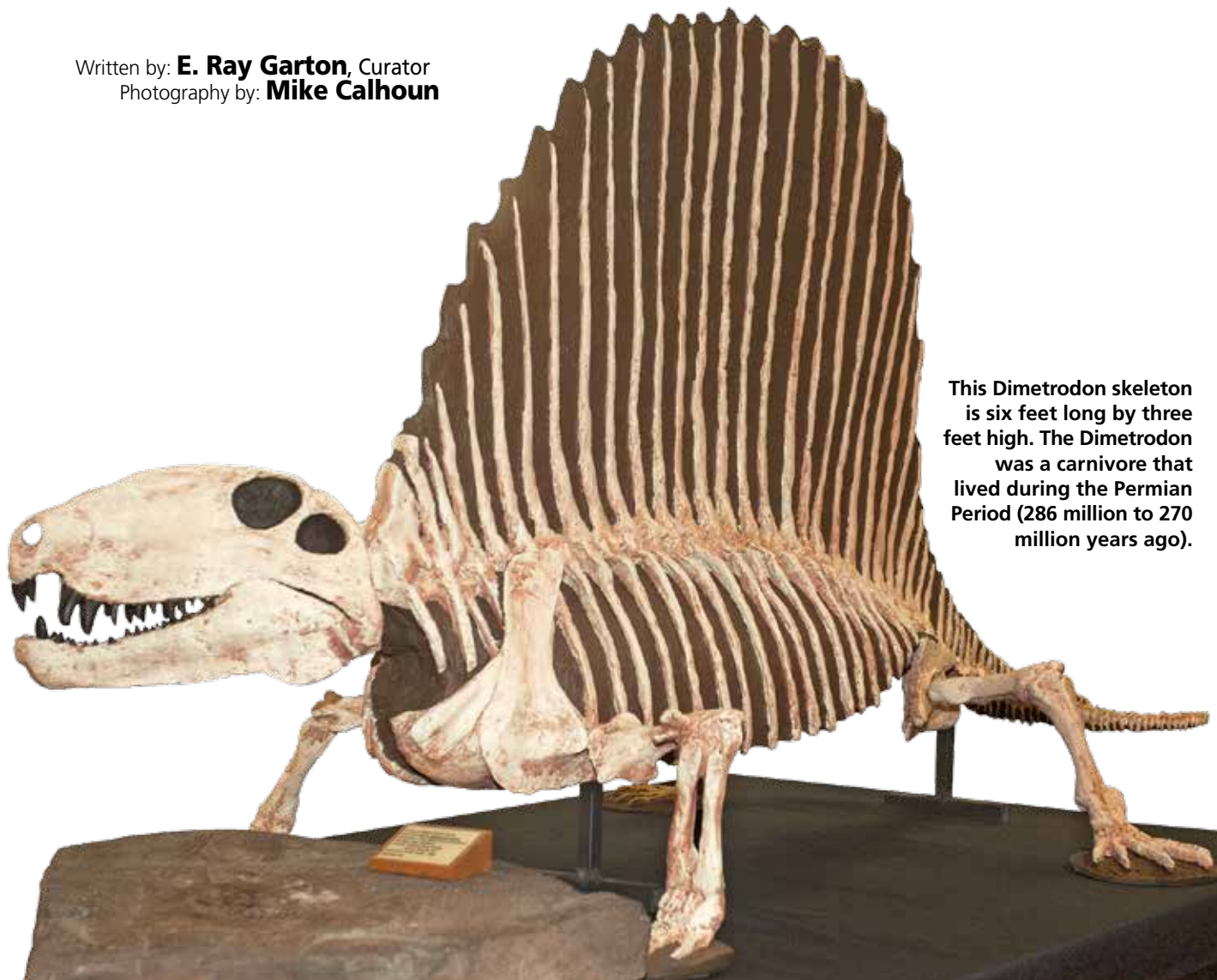


# What's New at the WV Geological Survey Museum — New Hidden Treasures

Written by: **E. Ray Garton**, Curator  
Photography by: **Mike Calhoun**



This Dimetrodon skeleton is six feet long by three feet high. The Dimetrodon was a carnivore that lived during the Permian Period (286 million to 270 million years ago).

In the Fall/Winter 2014 issue, *Mountain Discoveries* magazine brought you “Hidden Treasures at the West Virginia Geological & Economic Survey Museum.” Now we’re letting you know about some additional treasures that have been added in the past seven years. The museum lobby has undergone a dramatic rearrangement with several large exhibits being added. There are now three large, free standing, replica prehistoric skeletons: *Tarbosaurus bataar* (The Asian T-Rex) is 23 feet long and 9 feet high, *Coelodonta antiquitatis* (Woolly Rhino) is 13 feet long and 6 feet high, and the WV State Fossil, *Megalonyx jeffersonii* (Jefferson

Ground Sloth) is 12 feet long and 8 feet high. These recent additions join the authentic 67 million-year-old Edmontosaurus skeleton (a favorite prey of T-Rex), the only authentic dinosaur fossil skeleton on display in West Virginia. The main lobby museum is still home to T-Rex, Triceratops, Allosaurus and many other skulls and authentic fossils, as well as a collection of skulls from our early human hominid ancestors. Enjoyed by both children and adults, is the interactive “magic sandbox” where you can create a detailed sandscape with mountains, valleys and bodies of water (if it’s not turned on, ask the front desk!).



**Left:** The newly renovated second floor balcony showcases hundreds of rocks, minerals, fossils, and economic natural resources of West Virginia.

**Below:** Quartz Crystal Cluster (Silicon dioxide) — this specimen of Devonian age may be the largest native quartz crystal cluster ever discovered in the state of West Virginia. Jim Smedley of Follansbee, WV, collected it in 1965 at the PPG Glass sand quarry near Berkeley Springs, Morgan County, WV.

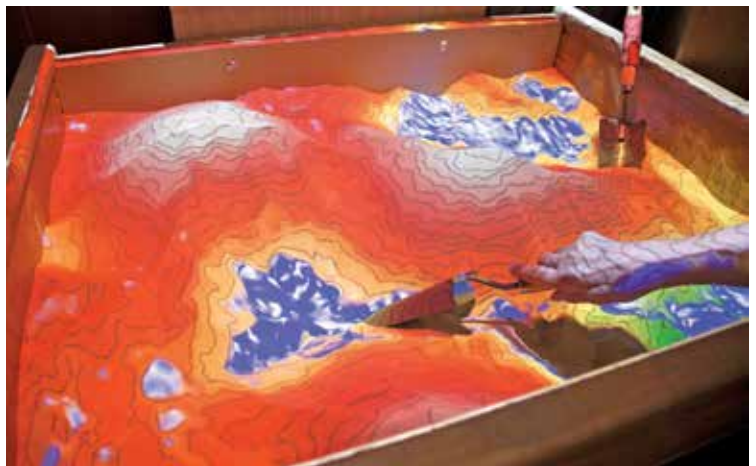
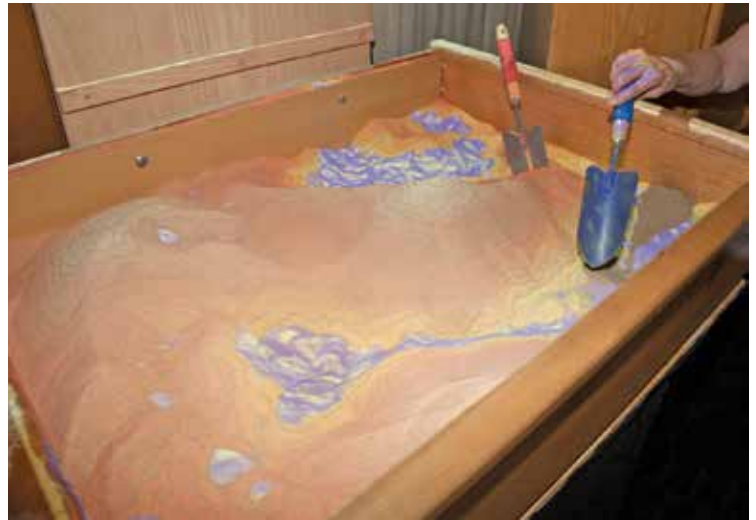


The newly renovated second floor balcony is now home to our Dimetrodon skeleton at 6 feet long and 3 feet high. Lighted showcases display hundreds of minerals and fossils from around West Virginia and the world. An interactive exhibit of meteorites has also been added. These chunks of rocks from space are billions of years old and help tell the story of the early solar system.

One of the most popular additions is a gift shop located off the entrance lobby. Here you'll find gifts for all ages including rocks, minerals, fossils, T-shirts, dinosaur plush and pocket poop (dinosaur coprolite).

In addition to the museum interior, visitors can explore the park-like setting and views of historic Mont Chateau and Cheat Lake. Informational displays are offered in the museum for visitors who wish to learn more about the history of the building and its surrounding area.

Museum hours are Monday-Friday 9am-5pm. Admission is free. School and group field trips are



**Right two photos:** Enjoyed by both children and adults, the "magic sandbox" allows museum visitors to interactively create a topographic map. Form hills and valleys and watch the topography change as the sand is moved.



Some of the items at the Gift Shop located off the entrance lobby.

welcome. Groups of 10 or more are encouraged to call ahead for an appointment. For more information contact the West Virginia Geological & Economic Survey Museum: call 304-594-2331, email [info@wvges.wvnet.edu](mailto:info@wvges.wvnet.edu) or visit the website <http://www.wvges.wvnet.edu> to access the online appointment form.

*The museum is located at Cheat Lake – Exit 10 off I-68; address 1 Mont Chateau Road, Morgantown, WV 26508. Approximately 45 miles (50-55 minutes from Oakland and Deep Creek Lake) and approximately 70 miles from Cumberland, MD or Pittsburgh, PA.*

*The 2014 Fall/Winter Mountain Discoveries article can be viewed at [mountaindiscoveries.com](http://mountaindiscoveries.com) Past and Present Issues.*



## 92-Page Book & Large Poster Available



**All That Remains**  
 \$25 ea. (includes shipping)  
 92 pages; over 230 artifact photos.

**Projectile Points Poster**  
 \$15 ea. (includes shipping)  
 23" x 29" Poster showing actual size Projectile Points for ease in identifying your points.

Send check, money order (code MD), or credit card info to:

**Prehistoric Planet**  
 P.O. Box 200  
 Barrackville, WV 26559  
 Text orders to: 304.282.2306  
 OR Email orders (code MD) to: [curator@prehistoricplanet.com](mailto:curator@prehistoricplanet.com)