

Visit
HAGERSTOWN
& Washington County, MD

View of 4 National Parks in Washington County from Weverton Cliff.

FIND YOUR PARK

NATIONAL PARK SERVICE CENTENNIAL
Washington County has 5 National Parks - #FindYourPark

Call today for your **FREE** Visitor Guide!

Visit
HAGERSTOWN
& Washington County
Convention and Visitors Bureau

explore! Antietam Battlefield and Cemetery, C&O Canal, Potomac Heritage National Trail, Appalachian Trail, and Harpers Ferry Overlook.

MARYLAND SCENIC BYWAY

888-257-2600 | VISITHAGERSTOWN.COM

WCMFA Celebrates its 85th Year

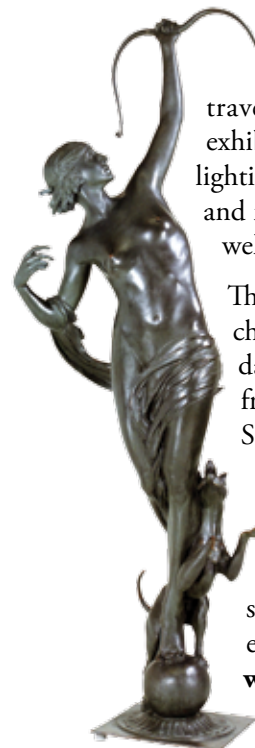


The Washington County Museum of Fine Arts (WCMFA), located in beautiful City Park, Hagerstown, Maryland, was recently featured on FlipKey's travel blog as one of the nation's "Top Museums Worth Traveling For." The museum represents the state of Maryland in the blog post, part of FlipKey's 50 States Series, touching on a number of subjects and highlighting attractions from state to state. The list includes some of the most sophisticated and high end museums in the country.

The WCMFA is celebrating its 85th year of connecting people to art in 2016. It is one of the finest small art museums in the nation with a permanent collection of more than 6,500 paintings, drawings, prints, sculptures and other works of art.

The museum has permanent exhibits as well as rotating, traveling and juried exhibitions, often highlighting the work of local and regional artists as well as students.

The WCMFA is free of charge and open Tuesday through Friday from 9 a.m. to 5 p.m.; Saturday 9 a.m. to 4 p.m.; Sunday 1 to 5 p.m.; closed on Mondays. For more information and special anniversary exhibits, visit www.wcmfa.org or call 301-739-5727.




IT • Security • Audio

Welcome to the Future of Whole Home Control & Automation

Custom Technology Integrators
Since 1997

M-TEK 
Connect & Protect

DEEP CREEK LAKE
21339 Garrett Highway
Oakland, MD 21550

855•GET•MTEK
www.M-TEK.biz