

# Dream Mountain Getaway

Sometimes Dreams Do Come True

Written by: **Paula Yudelevit**

Photography by: **Lance C. Bell**

Resort developments are becoming increasingly popular as the second home market continues to grow. Many are becoming cookie-cutter, adding the same amenities in the hopes of attracting potential buyers. But there's one resort community in Preston County, West Virginia, that's breaking the mold. The amenities at Dream Mountain Ranch are Mother Nature's unspoiled beauty – and it's practically in our own backyard.



*A Dream Mountain Ranch whitetail buck in "velvet".*

Dream Mountain Ranch, thirty minutes from the Deep Creek Lake area, is a place where families, nature lovers, photography buffs, and outdoor enthusiasts can explore and discover new adventures at every turn on its 1,150 pristine acres. Vacation home owners and resort members will take pleasure in amenities such as the fifty-five miles of marked trails that allow for horseback riding, hiking, mountain biking, cross country skiing, snowshoeing, ATV and snowmobiling. Or having their own on-staff naturalist, Mike Clester, guide them on nature walks, taking in all that nature has to offer. Professional outdoor photographer, Lance Bell, will lead wildlife photo safaris, while explaining the best angles and light for photography. Eight ponds and the popular Muddy Creek, are home to trout, bass, and pan fish – a fly fisherman's dream. This is a place where simply relaxing and gazing at the magnificent views of the surrounding mountain ranges and rolling meadows is an adventure. It's the freedom and solace of this unspoiled land that keeps leading you back.

And that's not all.

As you tour Dream Mountain Ranch, you begin to realize that you're not alone, but sharing the land with even more of nature's beauty. There are elk, buffalo, whitetail deer, and wild turkey freely roaming in their protective preserve. You may come across a Ruffed Grouse tending to her brood, or see a Red-tailed Hawk high on a naked tree limb viewing his own reserve. This is nature at its best.

"Dream Mountain Ranch is truly a photographer's dream," says photographer Lance Bell, co-owner of Advertising Art Design Inc., a creative solutions firm. "It's one of the most spectacular places I have ever been to photograph so much of nature's offerings."

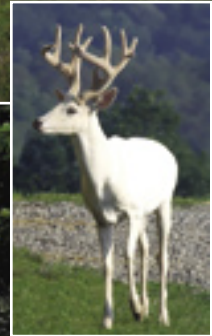
The owners of the resort plan to keep it that way. Eight-hundred acres have been set aside as a nature conservancy that will never be developed or used for anything other than its own natural course of evolution.

Mark Tonkovich, Ranch Manager, explains. "We are stewards of an awesome piece of nature; of land that is to be shared by mankind and all living creatures. It is our responsibility to make sure it remains this way for our members and their families to enjoy now and in generations that follow."

As a second home resort development, preserving nature's gifts is still a priority. Approximately 250 acres of the 1,150 have been thoughtfully platted for two-to-seven acre home sites. Phase One home sites of the planned development is already sold out. Phase Two will be available this fall. In addition, five corporate lots are designated for business retreats and corporate meetings. All home sites include a resort membership which entitles owners and their guests to all amenities and use of the 800 conservancy acres.

Resort memberships to Dream Mountain Ranch will also be available without home site ownership on a very limited basis. Home owners and resort members will enjoy all of the amenities and use of the 800 conservancy acres and of the resort's newly renovated lodge and future log cabins.

The owners have renovated and completely refurnished the resort's lodge which features four bedrooms, a fully equipped modern kitchen and dining area, and beautifully-appointed leather furnishings in the lodge's great room. The resort is also home to a log cabin, dating back to the 1800's. This too will be renovated and used as a day



*Fifty-five miles of trails and eight ponds plus Muddy Creek make for an abundance of outdoor activities.*

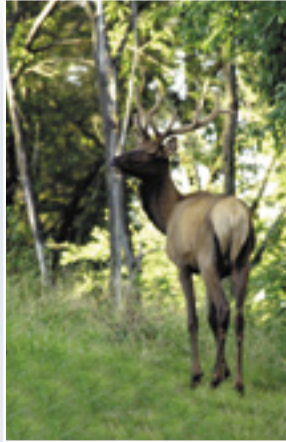


lodge. Future plans call for smaller, two-person cabins.

Guided wildlife and game bird hunts at specific times throughout the year and through a lottery system, will be offered to members. "It is very important to the wildlife, as well as our members, that there's a balance between keeping the herds strong and providing hunts for our members," Mike Clester explains. "Limited, guided hunts allow us to maintain a sense of balance."

More amenities and activities are planned in the future at Dream Mountain Ranch. A pool and pavilion, equestrian center, cooking classes and wine tasting dinners, and fly fishing and gun safety and shooting courses are all part of the master resort design. Reciprocal amenity agreements with other area resorts are in the planning process.

Nearby attractions make Dream Mountain Resort an even more desirable location for a vacation home. Neighboring Cheat Canyon offers whitewater rafting, kayaking and canoeing. At Coopers Rock State Park, bands of rockcliffs line the Cheat River Gorge and provide numerous overlooks, offering panorama views of distant horizons and the gorge. The Allegheny Trail provides an excellent access point for



*Young bull Elk, like this one, roam freely at Dream Mountain Ranch.*

hikers headed for the Laurel Run Trailhead, extending 330 miles from Preston County. Deep Creek Lake and Wisp Ski Resort are only thirty minutes from Dream Mountain Ranch. Water sports such as boating, skiing and wakeboarding, fishing and swimming in the summer, and down hill skiing, snowboarding, snow tubing and ice fishing in the winter are now close at hand. Other outdoor adventure is close by as well. Caving, world-class trout fishing, rock climbing and more provide an abundance of adrenaline-pumping excitement for any outdoor enthusiast.

Fine dining, spas, and golf are also nearby. Nemaquin Woods Resort features fine dining, a completely renovated spa and two golf courses. Wisp and Lakeview Resorts, and Preston Country Club all feature fine restaurants and beautifully manicured, professional golf courses.

Dream Mountain Ranch, located off I-68 in Albright, West Virginia, is three hours from the Baltimore/Washington area and thirty minutes from Deep Creek Lake and Wisp Ski Resort. For more information on the resort development, and their discovery tours, please visit [www.dreammountainresort.com](http://www.dreammountainresort.com) or call (304) 379-2773.

*"Dream Mountain Ranch has more beautiful vistas and scenic spots than any one place I have been to in a long time. I could spend days there and never run out of things to photograph."*

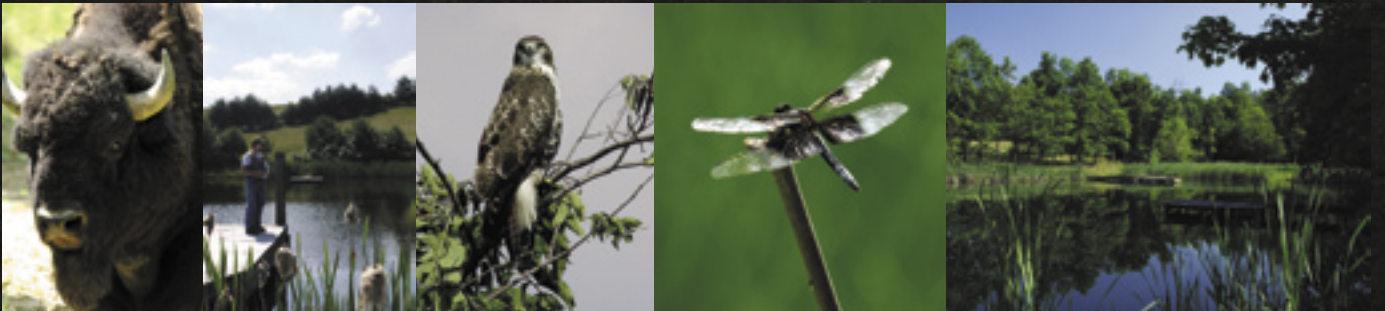
*—Lance C. Bell, Photographer, Mountain Discoveries.*



*Dream Mountain Ranch, thirty minutes from the Deep Creek Lake area, is a place where families, nature lovers, photography buffs, and outdoor enthusiasts can explore and discover new adventures at every turn on its 1,150 pristine acres.*



*All Photography © 2005, Lance C. Bell*



*Buffalo, elk, deer, and many other wildlife species are an awesome sight at the resort.*